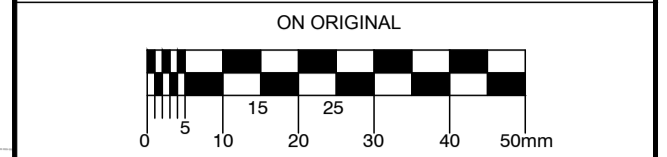
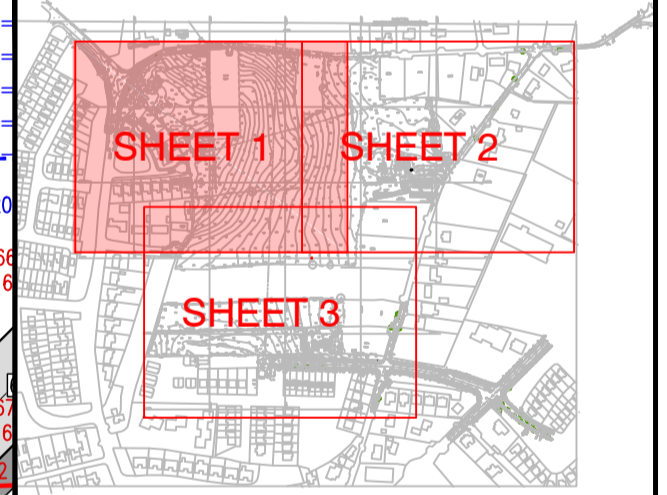


© COPYRIGHT OF THIS DRAWING IS RESERVED BY DBFL CONSULTING ENGINEERS. NO PART SHALL BE REPRODUCED OR TRANSMITTED WITHOUT THEIR WRITTEN PERMISSION.



- NOTES:
1. ALL WORKS SHALL BE CONSTRUCTED IN ACCORDANCE WITH THE WORKS REQUIREMENTS.
 2. ALL DIMENSIONS IN METRES UNLESS SPECIFIED OTHERWISE.
 3. ALL CO-ORDINATES ARE TO HIGH TRANSVERSE MERCATOR.
 4. ALL LEVELS ARE TO ORDNANCE DATUM (MAIN HEAD).
 5. ALL TEMPORARY TRAFFIC & OPERATIONS MANAGEMENT SHALL COMPLY FULLY WITH THE WORKS REQUIREMENTS.
 6. THE CONTRACTOR MUST UNSEAL DIRECTLY WITH LOCAL AUTHORITY DEPARTMENTS AS DIRECTED IN THE WORKS REQUIREMENTS.
 7. ALL TEMPORARY TRAFFIC & OPERATIONS MANAGEMENT WITHIN AND SURROUNDING THE WORKS EXTENTS MUST BE MAINTAINED THROUGHOUT THE WORKS IN ACCORDANCE WITH THE CONTRACTOR'S APPROVED TEMPORARY TRAFFIC & OPERATIONS MANAGEMENT PLAN.
- DRAWING SPECIFIC NOTES:
1. ALL DRAWINGS TO BE CHECKED BY CONTRACTOR ON SITE AND ENGINEER INFORMED OF DISCREPANCIES BEFORE WORK COMMENCES.
 2. CONTRACTOR SHALL SATISFY HIMSELF AS TO THE ACCURACY OF EXISTING DRAINAGE LEVELS & THE LOCATION OF EXISTING SERVICES ON SITE PRIOR TO COMMENCEMENT OF WORKS ON SITE.
 3. ALL WORKS TO BE CONSTRUCTED IN ACCORDANCE WITH THE NRA SPECIFICATION FOR ROAD WORKS UNLESS NOTED OTHERWISE.
 4. MANHOLE COVER LEVELS ARE TO CONFORM WITH FINISHED ROAD AND PATH LEVELS.
 5. ALL SURFACE WATER DRAINAGE WORKS TO BE IN ACCORDANCE WITH THE REQUIREMENTS OF THE LOCAL AUTHORITY'S CODE OF PRACTICE FOR DRAINAGE AND THE GOSS'S.
 6. ALL FOUL DRAINAGE WORKS TO BE IN ACCORDANCE WITH IRISH WATERS' CODE OF PRACTICE FOR WASTEWATER SUPPLY AND WASTEWATER INFRASTRUCTURE STANDARD DETAILS.
 7. FOUL SEWERS TO BE CONCRETE PIPES (SPIGOT AND SOCKET JOINTS AND RUBBER RING FITTINGS COMPLYING WITH IS EN 1916) OR THERMOPLASTIC STRUCTURED WALL PIPES (COMPLYING WITH THE PROVISION OF IS EN 13476 AND WS 4-35-01 2000) AND COMPLY WITH THE REQUIREMENTS OF THE IRISH WATER CODE OF PRACTICE.
 8. ALL SURFACE WATER SEWERS TO BE CLASS H CONCRETE TO EN 1916 & IS 6:2004.
 9. SURFACE WATER COLLECTOR DRAINS 150mm DIA.
 10. FOUL HOUSE CONNECTIONS TO BE 100mm DIA.
 11. THIS DRAWING IS BASED ON TOPO SURVEY BY J&L SURVEY LTD. DATED 06/2018.
 12. CONTRACTOR SHALL INSPECT THE ROUTE & CONFIRM LOCATIONS OF ALL TREES, FEATURES, ENTRANCES & ASPECTS IMPACTING CONSTRUCTION OF THE WORKS.
 13. NOTE THAT THE CONTRACTOR AND/OR ARCHITECT ARE RESPONSIBLE FOR CONNECTIONS INTO THE BUILDING.
 14. RISING MAIN TO BE POLYETHYLENE PIPE AND FITTINGS FOR WASTEWATER AND SHALL COMPLY WITH REQUIREMENTS OF IS EN 12201.

- LEGEND
- SITE BOUNDARY
 - SURFACE WATER SEWER
 - SURFACE WATER AJ AND 100P UPVC HOUSE DRAIN
 - SURFACE WATER DIFFUSER BOX
 - ROAD GULLY AND 150P COLLECTOR PIPE
 - SURFACE WATER ATTENUATION TANK
 - FOUL WATER SEWER
 - FOUL WATER SEWER RISING MAIN
 - FOUL AJ AND 150mm Ø UPVC HOUSE DRAIN
 - EX MH CL 99.99 IL 99.99
 - EX MH CL 99.99 IL 99.99
 - EX FOUL SEWER
 - EX FOUL SEWER
 - PROPOSED LEVELS
 - EXISTING LEVELS
 - ENTRANCE DOOR
 - FFL 99.99 FINISHED FLOOR LEVEL



ORDNANCE SURVEY IRELAND LICENCE
No EN 0017919
© ORDNANCE SURVEY IRELAND
GOVERNMENT OF IRELAND

- LIST OF IRISH WATER WASTEWATER STANDARD DETAILS BROUGHT INTO THE CONTRACT
- STD-WW-02 TYPICAL LAYOUT FOR SEWER WITHIN NEW DEVELOPMENT
 - STD-WW-03 DRAIN AND SERVICE CONNECTION PIPEWORK
 - STD-WW-04 TYPICAL SEWER/SERVICE PIPE CONNECTION
 - STD-WW-05 TYPICAL SERVICE LAYOUT INDICATING SEPARATION DISTANCES
 - STD-WW-06 RESTRICTIONS ON TREES/SHRUBS PLANTING ADJACENT TO SEWERS
 - STD-WW-07 TRENCH BACKFILL & BEDDING
 - STD-WW-08 CONCRETE BED, HAUNCH & SURROUND TO WASTEWATER PIPES
 - STD-WW-09 BLOCKWORK MANHOLE (<450mmØ)
 - STD-WW-10 PRE-CAST CONCRETE MANHOLE
 - STD-WW-11 IN-SITU CONCRETE MANHOLE
 - STD-WW-12 BACKDROP MANHOLES
 - STD-WW-13 PRIVATE SIDE INSPECTION CHAMBER
 - STD-WW-14 THRUST BLOCKS FOR RISING MAINS
 - STD-WW-15 SCOUR VALVE CHAMBER (FOUL RISING MAIN <200mmØ)
 - STD-WW-16 SLUICE VALVE DETAILS FOR RISING MAINS DUCTILE IRON (DI) PIPE (<200mmØ)(SHEET 1 OF 2)
 - STD-WW-17 SLUICE VALVE DETAILS FOR RISING MAIN POLYETHYLENE (P.E) PIPE (<200mmØ)(SHEET 2 OF 2)
 - STD-WW-18 AIR VALVE CHAMBER (FOUL RISING MAIN <200mmØ)
 - STD-WW-19 DUCT CHAMBER
 - STD-WW-20 EMERGENCY OVERFLOW STRUCTURE
 - STD-WW-21 TYPICAL DITCH/STREAM CROSSING FOR GRAVITY MAIN (SHEET 1 OF 2)
 - STD-WW-22 TYPICAL DITCH/STREAM CROSSING FOR RISING MAIN (SHEET 2 OF 2)
 - STD-WW-23 TYPICAL BRIDGE CROSSING FOR RISING MAIN (SHEET 1 OF 2)
 - STD-WW-24 TYPICAL BRIDGE CROSSING FOR RISING MAIN (SHEET 2 OF 2)
 - STD-WW-25 SECURITY GATE & FENCING
 - STD-WW-26 INDICATIVE PUMPING STATION LAYOUT
 - STD-WW-27 FLOW METER CHAMBER (FOUL RISING MAIN <200mmØ)
 - STD-WW-28 INDICATIVE SUBMERSIBLE PUMPING STATION
 - STD-WW-28A INDICATIVE PRE-CAST CONCRETE SUBMERSIBLE PUMPING STATION
 - STD-WW-29 RISING MAIN DISCHARGE MANHOLE
 - STD-WW-30 KIOSK TYPE 1 PUMPING STATION & WET KIOSK (SHEET 1 OF 2)
 - STD-WW-31 KIOSK TYPE 2 + 3 PUMPING STATION & WET KIOSK (SHEET 2 OF 2)
 - STD-WW-32 HARDSTANDING AREA PUMPING STATION (PERMEABLE & IMPERMEABLE)
 - STD-WW-33 LAMP BOLLARD & LAMP STANDARD
 - STD-WW-34 VENT STACK

B	240519	REVISED SHD SUBMISSION	ICD	DJR
A	110419	SHD SUBMISSION	ICD	DJR
REV.	DATE	DESCRIPTION	BY	CHKD

PLANNING			
DESIGNED	APR	PREPARED	GMC
DATE	2019	CHECKED	DJR

DBFL Consulting Engineers
www.info@dbfl.ie www.dbfl.ie

PROJECT
LANDS AT CAPDOO, CLANE, CO. KILDARE

DRG. TITLE
**SITE SERVICES LAYOUT
SHEET 1 OF 3**

CLIENT
ARDSTONE RESIDENTIAL FUND

SCALE	1:500 @A1	FILE REF.	162074-3001
DRG. NO.	162074-3001		B